

Simsbury Water Pollution Control Presentation Woodland Street and Hopmeadow Street Sewer Replacement



December 4, 2019

WPCA Overview

SIMSBURY
CONNECTICUT

- Operate and maintain an advanced wastewater treatment plant: 3.8 MGD capacity, 5 pumping stations, 85 miles of sewer lines, and 2,300 manholes
- 4,500 residential accounts and non-residential accounts
- Service Area includes Simsbury and portions of Avon and Granby
- Avon and Granby are co-owners of the treatment facility and participate in debt reduction and O&M funding
- Provide administrative services, oversee sewer usage billing, conducts inspections and develop long term planning



Mission - Duties

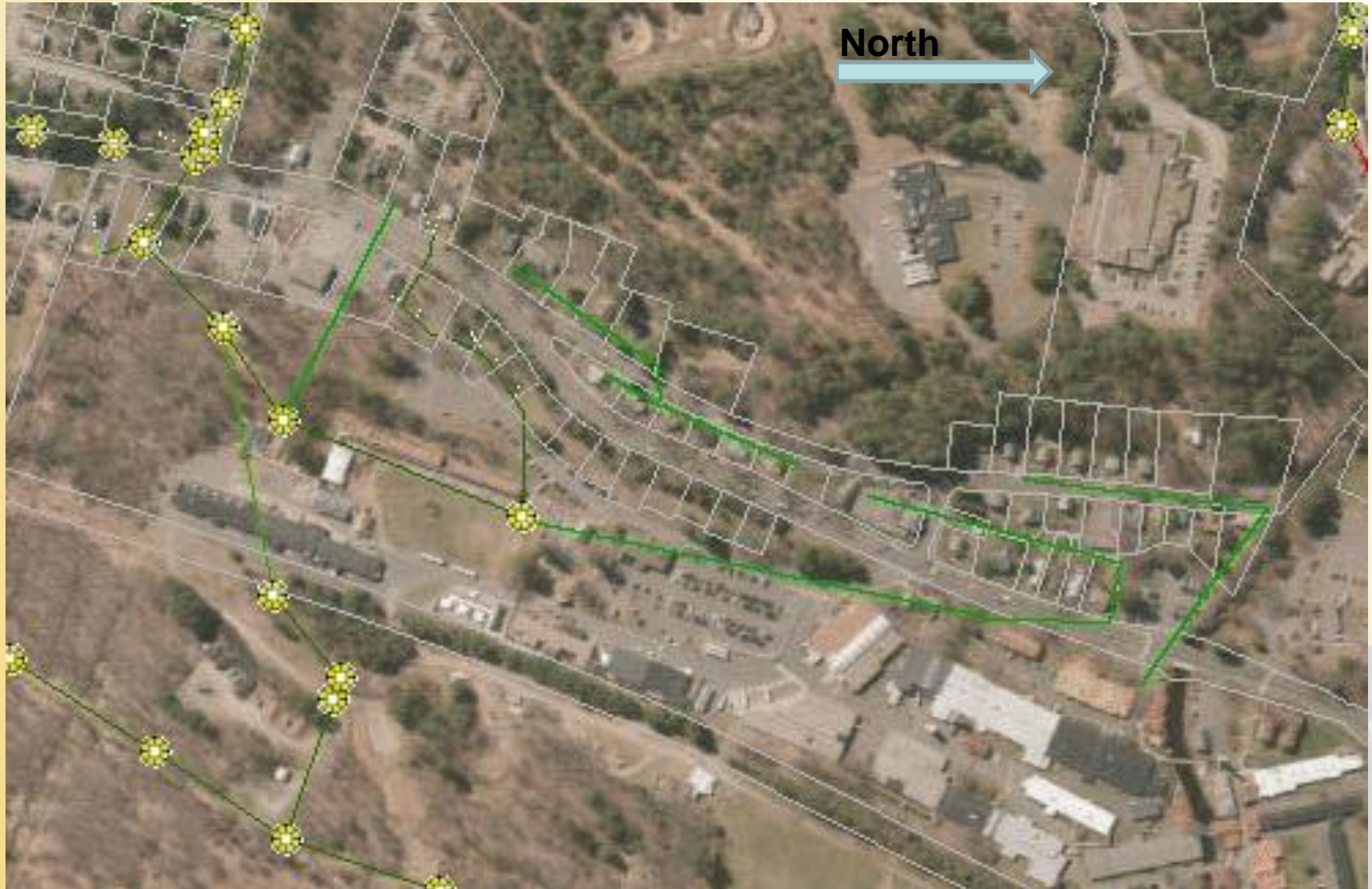
- WPCA is the sole decision making authority for sewer installations and repairs
- Finances are solely by supported by user fees:
 - Facility Connection Charges (FCC)
 - Sewer use fee

* The US Environmental Protection Agency, NPDES permit references CT state statute 22a-430-3 which mandates that the WPCA maintain adequate funding for repairs, operations and potential catastrophic equipment failures



Existing layout

SIMSBURY
CONNECTICUT



Potential New Layout

SIMSBURY
CONNECTICUT



Project Specifics

- Currently Dyno Nobel owns and maintains the existing sanitary sewers.
- Existing sanitary sewers in the area are not constructed to Town of Simsbury standards.
- Proposed to replace and/or install new main lines in Woodland St and Hopmeadow St area and repair / replace existing laterals.



Project Specifics

- Repave roadways disturbed by the construction.
- Town would own and maintain main lines when project is completed
- Final design may require easements be granted to the Town of Simsbury for installation and maintenance of the sanitary sewer.



Project Timing

- If approved by the WPCA this project would have an anticipated construction of Fall 2020 – Summer 2021
- Because of the size of the overall project, it may be separated into smaller projects.



Funding

- Funding for projects are through a revolving sewer assessment fund.
- WPCA includes funds in the yearly budget for potential extensions and rehabilitation.
- The fund is maintained by assessments, liens and refinancing commitments.



Construction Costs

- Preliminary cost estimate for survey, construction and main line construction is being completed.
- This project will be financed by Dyno Nobel.
- No cost to the homeowner.



What to Expect

➤ Construction:

- It's going to be disruptive
- You will always have access to your house/car
- No significant service interruptions

➤ Restoration:

- New pavement
- Regrading and seeding of lawns
 - If you water for us, it will provide a better final product

➤ Cost:

- No cost for the construction
- Sewer use fees remain the same



WPCA Board

Paul Gilmore - Chairman

Jerry Sheehan – Vice Chairman

Thomas Hickey

Edward Kelly

Michael Park

Jacques Brignac

Lucian Dragulski



Questions...